

SOPIX

With

Ace
technology



Cutting-edge Technology

SOPIX X-ray systems integrate the best of modern technology (Fiber-optic based CMOS)

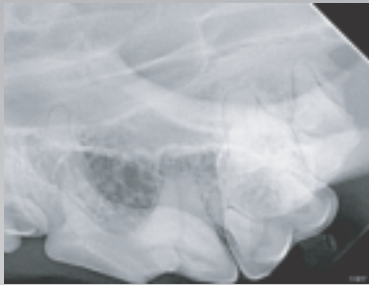


- Direct USB
- CMOS Based
- Size 1 and Size 2
- Rounded Corners
- Patented (ACE) Technology

The perfect shot everytime...

SOPIX

With **Ace**
technology



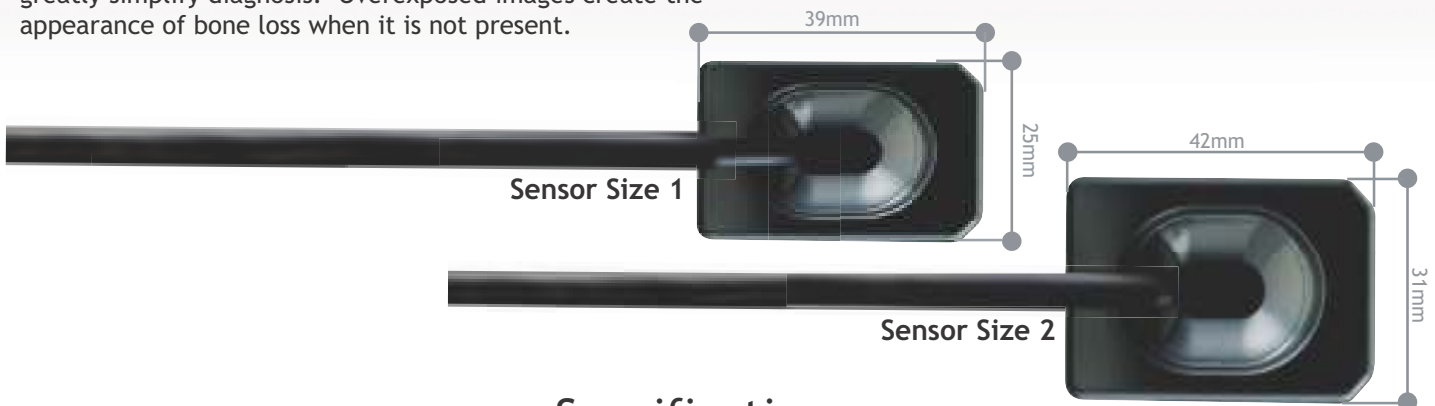
SOPIX at 0.20 seconds



Competitor sensor at 0.20 seconds

Exceptional image quality

High-definition images and striking contrast can be achieved to greatly simplify diagnosis. Overexposed images create the appearance of bone loss when it is not present.



Specifications

Controller:
 TechnologyCMOS + CHEW scintillator + optic fiber
 Theoretical resolution25 lp/mm
 Pixel size20um x 20 um
 ConnectionUSB 2.0
 Cable length for the USB cable3.70m / 12.1'
 (up to 8.70 m / 28.5' with booster supplied)
 Imaging software providedSopro Imaging

Size 1:
 External dimensions25 x 39 mm / .98" x 1.53"
 Active surface area600 mm² (20 x 30 mm)
 Number of pixels1.50 million

Size 2:
 External dimensions31 x 42 mm / 1.22" x 1.65"
 Active surface area884 mm² (26 x 34 mm)
 Number of pixels2.21 million

Minimum Configuration Required:

Operating systemWindows XP Pro SP2
 ProcessorIntel® Pentium IV - 1.3 GHz
 RAM512 MB
 Hard disk80 GB
 USB ports2 USB2 Hi-Speed ports
 Graphic card32 MB RAM
 USB Chip setIntel® or NEC
 Screen resolution1024 x 768

Configuration Recommended:

Operating systemWindows XP Pro SP2, VISTA SP1, Windows 7
 ProcessorIntel® Core 2
 RAM2 GB
 Hard disk320 GB
 USB ports4 USB2 Hi-Speed ports
 Graphic card with chip setNvidia or ATI256 MB video not shared
 USB Chip setIntel® or NEC
 Screen resolution1024 x 768 or more

